

CITP | CTFR

Enclosed changeover IP65

(plastic enclosure)
1P up to 4P

Size 0
A 12|20|25
IP65



CITP

CTFR



Technical information

According to IEC 60947-3

According to IEC 60947-3			CITP T12	CITP T20	CTFR TF25	
Rated thermal current	I _{th}	A	16	25	32	
Rated insulation voltage	U _i	V	500	500	690	
Rated impulse withstand voltage	U _{imp}	kV	6	6	6	
AC rated operational current	I _e	U _e 415V AC21A	A	16	25	32
		U _e 415V AC22A	A	16	25	32
		U _e 415V AC23A	A	10	25	20
Rated conditional short-circuit current		kA	10	10	5	
Rated maximum current	g _L -g _G	A	25	25	32	
Rated breaking capacity	400V; cos φ=0,45	A	80	100	200	
Rated short-time withstand current (1 sec)		A	240	400	500	
Mechanical durability (according to the standards, for other values please consult)			10000	10000	10000	
Rigid copper conductor		mm ²	2x4	2x4	1x10	
Flexible copper conductor		mm ²	2x2,5	2x2,5	1x6	

Normal service conditions:

Ambient air temperature (°C): -5°...+40°. Maximum altitude: 2.000 m. Maximum humidity: 90%. Pollution degree: 3 (standard for industrial applications). Rated frequency at AC utilization categories: 50/60 Hz.

Rated duties at utilization categories AC21A, AC22A and AC23A: Continuing (8 hours); uninterrupted.

Series | Amp
CITP0012
CITP0020
CTFR0025

Code 1 2 3 4 5 6 7 8 9 10 11 12 13 14 15 16

Diagram

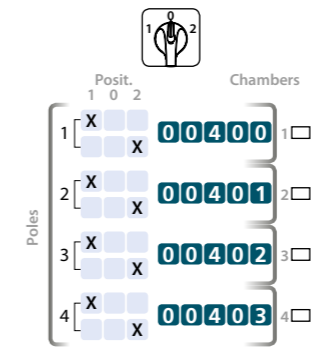
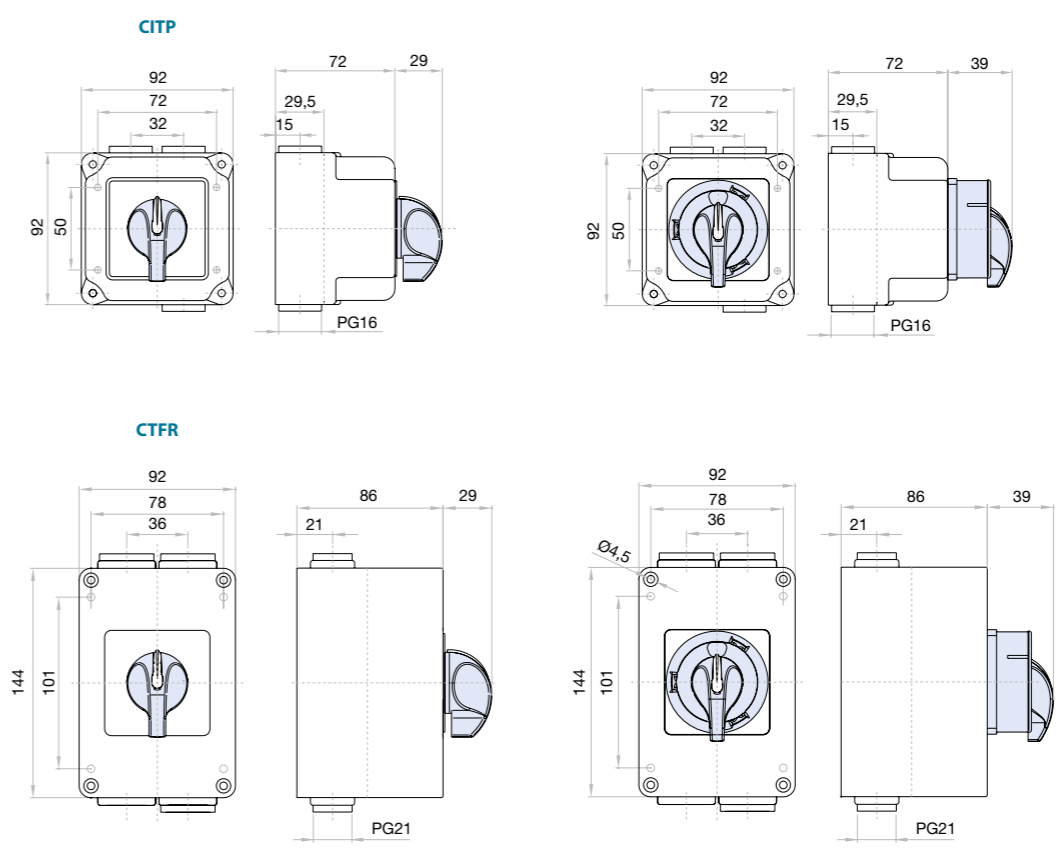


Plate and handle



Dimensions (mm)



L	Pisos		
	2□	3□	4□
T12 T20	72	86	100

L	Pisos	
	3□	4□
TF25	86	100

(in & out by cable gland - not included)

CITP | CTR

Enclosed changeover IP65

(plastic enclosure)
1P up to 4P

Size 1
A 16|25|32|40



CITP

CTR

Technical information



According to IEC 60947-3

According to IEC 60947-3			CITP T16	CITP T25	CITP CTR T32	CITP CTR T40	
Rated thermal current	I _{th}	A	25	32	40	50	
Rated insulation voltage	U _i	V	690	690	690	690	
Rated impulse withstand voltage	U _{imp}	kV	6	6	8	8	
AC rated operational current	I _e	U _e 415V AC21A	A	25	32	40	50
		U _e 415V AC22A	A	25	32	40	50
		U _e 415V AC23A	A	16	20	25	32
Rated conditional short-circuit current		kA	10	10	10	10	
Rated maximum current	g _L -g _G	A	32	32	50	50	
Rated breaking capacity	400V; cos φ=0,45	A	160	200	256	320	
Rated short-time withstand current (1 sec)		A	500	650	800	800	
Mechanical durability (according to the standards, for other values please consult)			10000	10000	10000	10000	
Rigid copper conductor		mm ²	2x6	2x6	2x10	2x10	
Flexible copper conductor		mm ²	2x4	2x4	2x6	2x6	

Normal service conditions:

Ambient air temperature (°C): -5°...+40°. Maximum altitude: 2.000 m. Maximum humidity: 90%. Pollution degree: 3 (standard for industrial applications). Rated frequency at AC utilization categories: 50/60 Hz.
Rated duties at utilization categories AC21A, AC22A and AC23A: Continuing (8 hours); uninterrupted.

Code 1 2 3 4 5 6 7 8 9 10 11 12 13 14 15 16

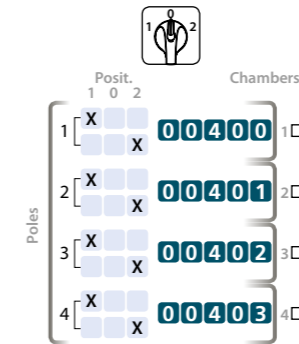
Series | Amp

CITP0016
CITP0025
CITP0032
CITR0032
CITR0040

Plate and handle

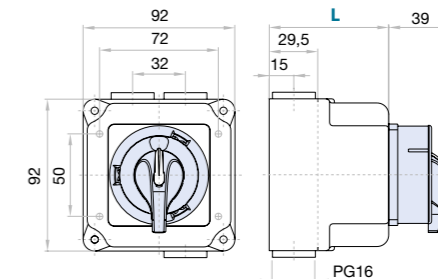
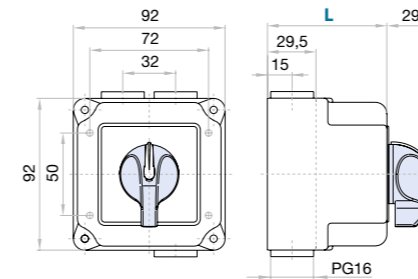


Diagram



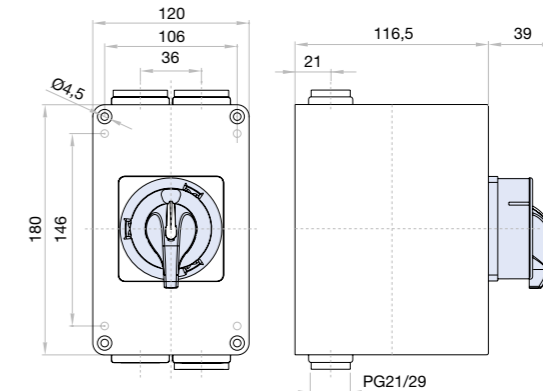
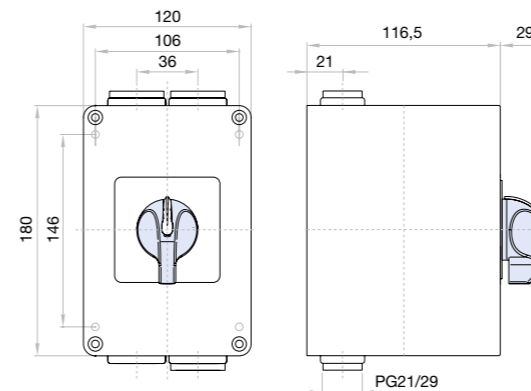
Dimensions (mm)

CITP
(up to 4 poles T16 - T25 & 3 poles T32 - T40)

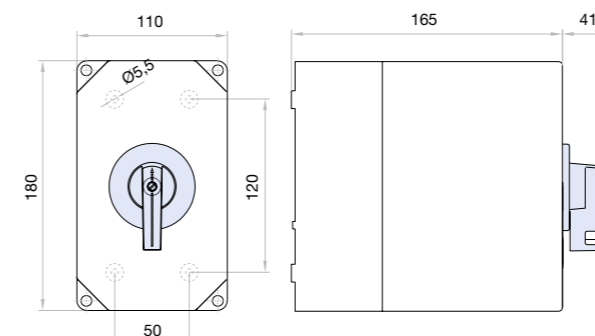


L	Pisos			
	1□	2□	3□	4□
T16 T25	72	86	100	114
T32 T40	72	100	114	-

CITR
(up to 3 poles T32 - T40)



CITR
(for 4 poles T32 - T40)



(in & out by cable gland - not included)

CITR

Enclosed changeover IP65

(plastic enclosure)
1P up to 4P

Size 2
A 63|100
Icons: Terminal block, IP65, 1P



CITR

Technical information



According to IEC 60947-3

According to IEC 60947-3			CITR T63	CITR T100
Rated thermal current	Ith	A	80	125
Rated insulation voltage	Ui	V	690	690
Rated impulse withstand voltage	Uimp	kV	8	8
AC rated operational current	Ie	Ue 415V AC21A	80	125
		Ue 415V AC22A	80	115
		Ue 415V AC23A	63	100
Rated conditional short-circuit current		kA	15	15
Rated maximum current	gL-gG	A	80	125
Rated breaking capacity	400V; cos φ=0,45	A	504	640
Rated short-time withstand current (1 sec)		A	1600	2500
Mechanical durability (according to the standards, for other values please consult)			10000	8000
Rigid copper conductor		mm ²	16/25 ^(*)	35/50 ^(*)
Flexible copper conductor		mm ²	10/16 ^(*)	16/35 ^(*)

*⁽¹⁾ With terminals for connection

Normal service conditions:

Ambient air temperature (°C): -5°...+40°. Maximum altitude: 2.000 m. Maximum humidity: 90%. Pollution degree: 3 (standard for industrial applications). Rated frequency at AC utilization categories: 50/60 Hz.

Rated duties at utilization categories AC21A, AC22A and AC23A: Continuing (8 hours); uninterrupted.

Code 1 2 3 4 5 6 7 8 9 10 11 12 13 14 15 16

Series | Amp
CITR0063
CITR0100

Diagram

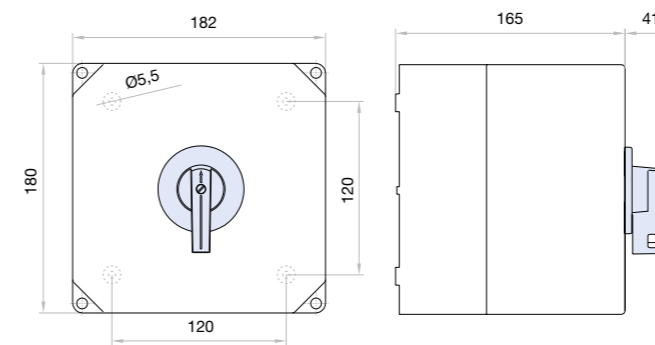
Plate and handle

Padlockable handle
For red/yellow handle, please consult

9N0

Diagram showing Pole positions (1, 0, 2) and Chambers (1, 2, 3, 4) with corresponding code digits (00400, 00401, 00402, 00403).

Dimensions (mm)



(in & out by cable gland - not included)